

Steel
Supplier
Service Center
Logistics
Services

As a **modern steel company** we meet our **customers' precise** requirements.

Accurately to the millimeter.

These days everything has to be available, high quality, reliable, promptly delivered and value for money. As a modern steel company we like that. Why? Because with our customer-oriented and cost-conscious products and services we can always satisfy the most popular requests immediately. And that's what you will like.

It all started in 1983 with the establishment of Jepsen Stahl GmbH in Regensburg. At that time our core business was dealing in rolled steel products from Poland and the former Czechoslovakia. The changes in the political structure in Eastern Europe and in steel trading conditions led us to expand our sourcing and sales areas considerably. Nowadays we look after our customers in Germany from our headquarters in Nittendorf. On top of that we have access to a network of subsidiaries and affiliated companies in the rest of Europe and they canvass and service our business relationships in the markets there. We source our material from all over the world, while still obtaining the largest proportion from our long-standing partners in Central Europe.

In 2008, with our steel logistics center, SLC Stahl Logistik Center GmbH in Vienna, we commissioned a high-performance hot strip cut-to-length line. With a comprehensive delivery schedule and individual logistics portfolio we can meet your requirements at any time – to your exact measurements.



The company's head office in Nittendorf

Our **range** includes **all** the **usual steel products** and **special grades.**

Unusual requests are also welcome.



Sound partnerships are our greatest asset. We nurture close relationships with our customers and suppliers and they reach beyond the usual limits. With this claim we offer a range of goods with security of supply that includes the most common grades of structural steel. In addition, we make every effort to procure grades that are requested less often so that we can meet special requirements.

Our range of hot strip includes the following grades:

- S235JR to EN 10025-2:2004
- S355J2+N to EN 10025-2:2004
- P265GH to EN 10028-2:2003
- S355MC to S700MC to EN 10149 part 2:1995

Other grades of steel, e.g. abrasion-resistant steels, are available on request. They can also be supplied pickled/oiled.

Range of dimensions

- **Thickness:** 1.50 - 20 mm
- **Width:** 800 - 2,100 mm
- **Length:** 2,000 - 22,000 mm

Also available with surface pattern (chequered or teardrop).

Hot-rolled narrow strip

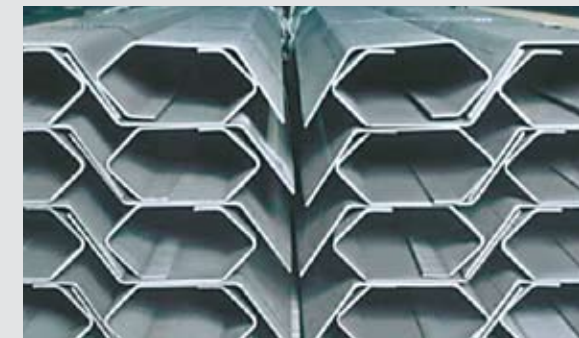
- **Thickness:** 2 - 12 mm
- **Width:** 110 - 800 mm

We can offer these products direct from the factory and from our warehouse stocks. All the products offered here comply with the current European standards and bear the CE mark.

A mill test certificate/test certificate to EN 10204/2.2 or 3.1 can also be provided.



High-tensile plates for bridges



High-tensile plates for cranes



We have the correct grade of product for every application.



Electricity pylon



Earthmover



Low loader

For more than 25 years, we have been impressing customers with our high quality for a very wide variety of applications, including automotive construction, machine-building, bridge-building, steel construction for buildings and tank construction. Fully meeting all of our customers’ requirements and delivering on time have always been central to our ethos.

Range supplied: Heavy plate

Grade: S235JR - S690QL
Thickness: 8 - 120 mm
Width: 1,500 - 3,000 mm
Length: 3,000 - 14,000 mm

Range supplied: angles

Grade: S235JR+AR - 16Mo3
Dimensions available: 80x80x5 - 180x180x18 mm
90x60x6 - 250x90x16 mm
Length: 3,000 - 14,000 mm

Range supplied: T-section

Grade: S235JR+AR - 16Mo3
Dimensions available: T 100x100x11
T 120x120x13
T 140x140x15
Length: 3,000 - 14,000 mm

Range supplied: pipes

Grade: S235JR – other grades on request
Dimensions available: Square/rectangular tubes to EN 10219/10305-5
20x20x2 - 120x120x6 mm
30x20x2 - 200x100x6 mm

• Black welded gas and water pipe to EN 10255, 1/2" - 4"
• Galvanized welded pipe to EN 10240, 1/2" - 4"
• Round tube for structural purposes DIN 1615
21.3x1.75 - 88.9x4 mm

Other dimensions on request.

Length: 6,000/12,000 mm –
other lengths on request

In addition to these products, which are permanently in stock, we also have excellent relations with suppliers from whom we can obtain, for example, cold-rolled, galvanized and elo-galvanized sheet and coils as well as profiled steel, bars and universal mill plate.

And complete logistics solutions.

If desired, we can organize complete transport solutions for you from any of our warehouses, including all logistics services to your destination. With many years of experience, we guarantee hassle-free delivery using whatever mode of transport you select.

The advantageous location of our new SLC Stahl Logistik Center at the port in Vienna means that we can also offer transport to anywhere in Europe. Depending on what is needed, we can combine road, rail and waterways in our logistics.

- The SLC has the very best technical facilities. We can therefore:
- load and unload ships under cover without regard to the weather
 - load and unload waggon under cover without regard to the weather
 - load and unload trucks in the heated warehouse
 - lift heavy loads with our 35 ton crane and 27 ton forklift truck



Road roller



Wind turbines



Silos



Transport by barge



Transport by train



Transport by truck

Even at **first glance** the
performance figures
of our **hot strip**
cut-to-length line
are **impressive.**



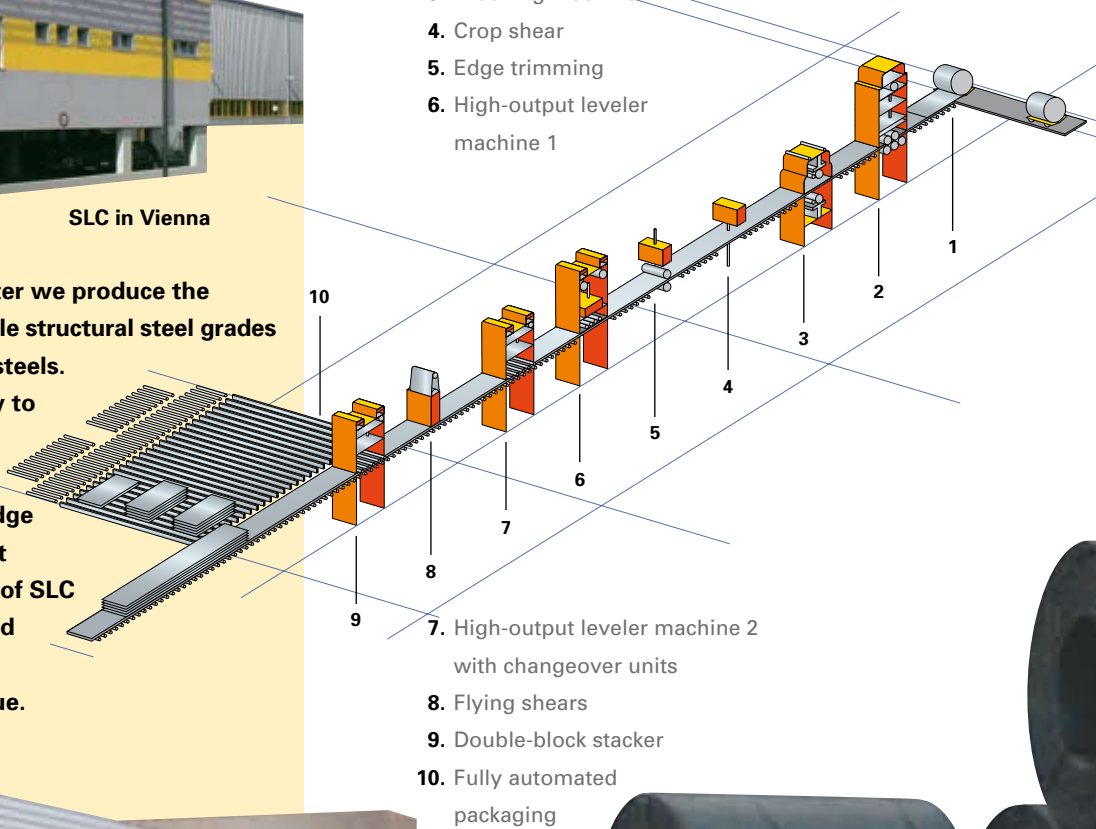
SLC in Vienna

In the SLC Stahl Logistik Center we produce the latest flat products, from simple structural steel grades right through to high-tensile steels. We produce steel strip exactly to customer specifications here.

Flatness, width, length and edge camber meet the very tightest tolerances. The achievements of SLC with respect to parallelism and out-of-squareness are virtually unique.

The plant consists of:

- 1. Coil loading
- 2. Straightening machine with anti-coil break system
- 3. Brushing machine
- 4. Crop shear
- 5. Edge trimming
- 6. High-output leveler machine 1



- 7. High-output leveler machine 2 with changeover units
- 8. Flying shears
- 9. Double-block stacker
- 10. Fully automated packaging



And at the **second** and **third** glances.

To us, a solid partnership is based on total customer care. Your contact person will therefore always work out a customized quotation for your specific requirements.

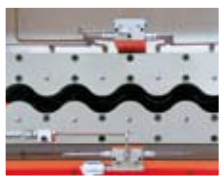
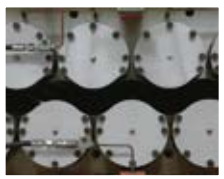
If there is anything needed to process your order that is not listed here, please let us know. We shall find a solution.

Technical Data

- Material:** untreated, pickled, galvanized
- Thickness:** 1.5 - 20 mm
- Width:** 420 - 2,100 mm
- Length:** 500 - 22,000 mm
- Length tolerance:** +/- 0.5 mm
for a reference length of 2,000 mm
+/- 0.1 mm for each additional 1,000 mm
- Width tolerance:** 1.5 - 6 mm: +/- 0.3 mm
6 - 16 mm: +/- 0.4 mm
- Coil weight:** 8 - 35 t
- Outside diameter:** 1,000 - 2,150 mm
- Inside diameter:** 610 - 850 mm
- Pack weight:** as desired
- Edging:** 5 - 50 mm on each side
up to 16 mm thick
- Flatness:** Plastification of the strip:
75% for laser cutting equal to
1/3 of EN 10029

Residual unevenness up to a maximum of 3.0 mm for a plate length of 1,000 mm after laser cutting is guaranteed.

Thickness in mm	Tensile strength N / mm ²	Yield point N / mm ²
2.0 - 10.0 max.	max. 1,000	max. 1,000
10.1 - 12.0 max.	max. 850	max. 800
12.1 - 20.0 max.	max. 850	max. 355



Reliability,
flexibility,
promptness
and transparency
are our
standards.

Just call us.

Jepsen Stahl GmbH
An der Brunnenwiese 2
93152 Nittendorf
Germany
Phone: +49 9404 9504-0
Fax: +49 9404 9553-08
info@jepsen-stahl.de
www.jepsen-stahl.de

